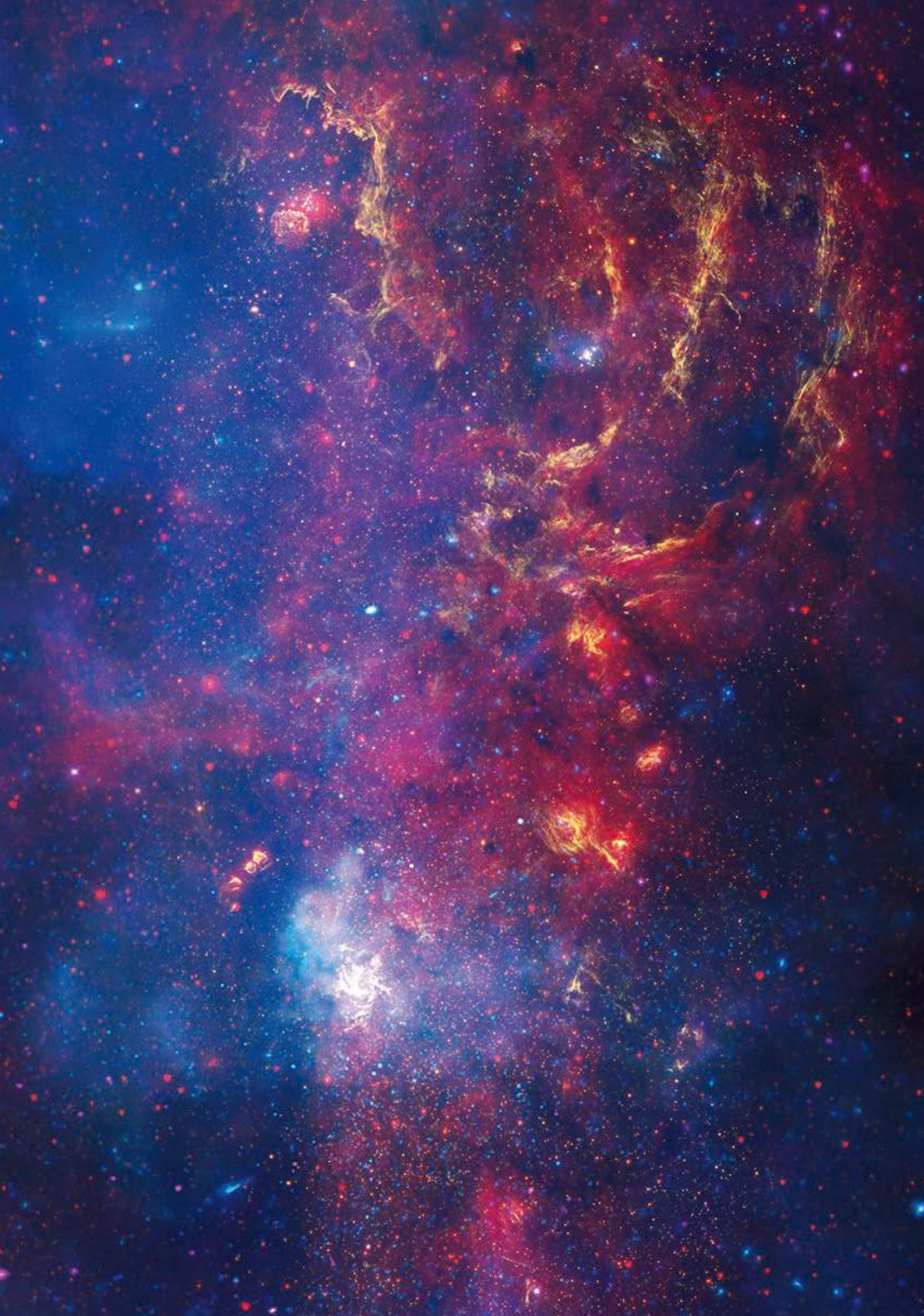




# DRY TONER LED PRINTERS





## About dry toner and LED printers



Toner is a very fine powder made up of tiny particles. It consists of synthetic resin, pigments, magnetisable metal oxides and various additional components.

It is available in almost every colour imaginable, the standard colours being cyan, magenta, yellow, black and white.

DTM Print dry toner printers are virtually maintenance-free and easy to use. You get high-resolution prints within seconds, which is another benefit.

The LED printing process is similar to laser printers, with dry toner being fused to the label material by a heating unit (fuser). Thanks to this technology, the printer takes up less space, is compact, energy efficient and therefore environmentally friendly using significantly less raw materials and energy in the manufacturing process.

Dry toner printers can print on virtually any type of substrate without any pre-treatment, producing excellent results even on porous and textured paper stock. Our Genuine DTM DryToner Label Stock is available in many standard sizes as well as custom-made shapes and sizes.

### Key end-user sectors for the booming dry toner LED printing market

Use your dry toner label printer for all types of product labels/tags, personalised labels and many more. For more inspiration on possible markets, scan the QR-code.



Food/Beverages



Horticulture



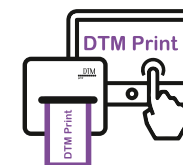
Events/Tickets/  
Promotions



Chemicals/  
Detergents



Logistics/Packaging



POS Solution



Product samples



Cosmetics



# CX86e

COLOUR TAG PRINTER



## Facts about the CX86e Colour Tag Printer

DTM CX86e is the world's smallest and most cost-effective LED dry toner colour label printer and helps companies to produce very durable, versatile and professional colour tags and labels. It is the ideal solution when no further processing, e.g. by means of an applicator, is required. Tags, vouchers, coupons and many more are printed on-site and can be handed out or applied immediately.

### Key facts


- ▶ Dry toner LED technology
- ▶ Small, compact size
- ▶ Direct output dispensing
- ▶ Cost-saving substrates, no special coating needed
- ▶ Easy to operate, virtually maintenance-free
- ▶ UV- and scratch-resistant prints
- ▶ High print speed



### Perfect for POS and kiosk solutions


Due to its compact size the CX86e is ready to use everywhere and easy to transport. As LED printheads have no moving parts, the CX86e is a robust and ultra reliable printer enabling simple application. Take your advertising campaigns, stalls and fairs to a new level by enabling customers to add personalisation on-site. If placed on your point of sale, you can print labels and tags with the name, greeting or any other personalisation directly on-demand. That will attract customer attention and increases sales.





 **Toner**  
Single tri-colour CMY

 **Print Width**  
Max. 81 mm (3.15")

 **Volume**  
Up to 5,000/day

 **Features**  
Presenter module (optional)

 **Print Speed**  
Up to 152.4 mm/s (6"/s)

 **Compatible with**  
Windows

### What's in the box?

- ▶ NiceLabel Free DTM Version (Windows)
- ▶ External roll supply kit (passive label unwinder)
- ▶ CMY toner cartridge
- ▶ Instructions & sample book
- ▶ Test paper sheets for demo printing

### More information

Scan the QR code to see all videos related to the CX86e.

Visit [dtm-print.eu](http://dtm-print.eu) for detailed information.



# Pro1050 | Pro1040



## Pro1050



## Pro1040



### Toner

5 separate dry toners:  
CMYK + White (Pro1050)  
4 separate dry toners:  
CMYK (Pro1040)



### Print Width

Max. 121,76 mm  
(4.93")



### Features

Print with white toner  
(Pro1050)



### Compatible with

Windows



### Volume

Up to 10,000/day



### Print Speed

Up to 152 mm/s (6"/s)

## Facts about the Pro1050/1040 LED Label Printer

The OKI Pro1050/1040 LED colour label printer offers new flexibility for medium to high volume colour label printing. With the unique fifth colour option "white", the Pro1050 takes creativity to a new level: transparent or coloured label materials are no longer a problem! Based on full-colour digital electrographic printing technology comprising five/four LED engines, the Pro1050/1040 prints complete rolls of labels, which can be either rewound or automatically cut into single sheets.

### Key facts

- ▶ Dry toner LED technology
- ▶ CMYK + White toner (Pro1050)
- ▶ Cost-saving substrates, no special coating needed
- ▶ Easy to operate
- ▶ UV- and scratch-resistant prints
- ▶ High print speed



### Easy to operate

The Pro1050/1040 is easy to set up within minutes and requires minimal training to use the flexible configuration. To simplify the installation DTM Print offers a complete solution with an all-in-one PC, approved for 24/7 nonstop operation. As well as producing brilliantly coloured product labels of all kinds, the Pro1050/1040 is also ideally suited for all industrial print jobs.

### What's in the box?

- ▶ NiceLabel Free DTM Version (Windows)
- ▶ 3x4" DTM Poly PET Transparent Gloss starter roll
- ▶ CMYK + White toner cartridges (Pro1050)
- ▶ CMYK toner cartridges (Pro1040)
- ▶ Instructions & sample book

### More information

Scan the QR code to see all videos related to the Pro1050.

Visit [dtm-print.eu](http://dtm-print.eu) for detailed information.



# Technical Specifications – Comparison Table



	<b>CX86e</b> COLOUR TAG PRINTER	<b>Pro1040   Pro1050</b>
<b>Print Method</b>	Full-colour electrophotographic with three separate LED print engines	Full-colour electrophotographic with four (Pro1040) or five (Pro1050) separate LED print engines
<b>Print Resolution</b>	600 x 600 dpi native; up to 1200 x 1200 dpi	600 x 600 dpi native; up to 1200 x 1200 dpi
<b>Toner</b>	Single high capacity CMY toner cartridge, process black	Separate toner cartridges for cyan, magenta, yellow, black (CMYK) (Pro1040) and white (CMYK+W) (Pro1050)
<b>Print Speeds</b>	Up to 152 mm (6") per second	Up to 152 mm (6") per second
<b>Printhead</b>	3 LED Line Heads	4 LED Line Heads (Pro1040) or 5 LED Line Heads (Pro1050)
<b>Colours</b>	16.7 million	16.7 million
<b>Colour Matching</b>	ICC colour profiles included; ability to select Automatic, Simple Adjustment, Graphic Pro or No Colour Matching	ICC colour profiles included; ability to select Automatic, Simple Adjustment, Graphic Pro or No Colour Matching
<b>Print Width</b>	Max. 81 mm (3.15")	Max. 126 mm (4.95")
<b>Media Width</b>	25 mm - 86 mm (0.984" - 3.386")	25.4 mm - 130 mm (1" - 5.1")
<b>Print Length</b>	53 mm - 551 mm (2.1" - 21.7")	12.7 mm - 1320.8 mm (0.5" - 52")
<b>Media Types</b>	Roll-fed labels and tags, fan-fold labels or tags or single sheets (Use Genuine DTM DryToner Label Stock for a variety of approved dry toner materials.)	Roll-fed labels or tags (Use Genuine DTM DryToner Label Stock for a variety of approved dry toner materials.)
<b>Media Sensing</b>	Moveable see-through sensor for die-cut labels; moveable reflective sensor for labels and tags with black mark (top or bottom) and through hole (notch); can also use continuous and pre-printed labels and tags	Moveable see-through sensor for die-cut labels; moveable reflective sensor for labels and tags with black mark (top or bottom) and through hole (notch); can also use continuous and pre-printed labels and tags
<b>Media Feed</b>	External	Integrated external unwinder
<b>Supply Roll</b>	With DTM Passive Label Unwinder: 254 mm (10") maximum roll diameter on virtually any core bigger than 25.4 mm (1")	203 mm (8") maximum roll diameter on 76 mm (3") core
<b>Cutter</b>	Built-in guillotine cutter; cuttable media length: 53 mm - 551 mm (2.1" - 21.7")	Built-in guillotine cutter; cuttable media length: min. 102 mm (4")
<b>Toner Level Warning</b>	Calculates actual number of prints remaining based upon toner usage of graphics being printed.	Calculates actual number of prints remaining based upon toner usage of graphics being printed.
<b>Operating Systems</b>	Windows 7 - 11, Windows Server 2008, 2008 R2, 2012, 2012 R2, 2016	Windows 7 - 10, Windows Server
<b>Data Interface</b>	USB 2.0, Ethernet (100BASE-T/10BASE-T), WLAN (optional), GPIO control port	USB 2.0, Ethernet (100BASE-T/10BASE-T)
<b>Label Design Software</b>	NiceLabel Free DTM Edition (Windows); upgrade for data import and variable data printing Can also be used with most other popular label design & graphics programs.	NiceLabel Free DTM Edition (Windows); upgrade for data import and variable data printing Can also be used with most other popular label design & graphics programs.
<b>Power Requirements</b>	220-240 V AC (50/60 Hz)	230 V AC (50/60 Hz)
<b>Certifications</b>	CE, GS, WEEE, RoHS2, REACH	UL, cUL, cULus, CE, RoHS, GS, BIS, WEEE, REACH CSA, EMC
<b>Weight</b>	9.5 kg	62 kg (incl. unwinder)
<b>Dimensions (WxHxD)</b>	198 mm x 195 mm x 380 mm	1040 mm x 477 mm x 441 mm
<b>Operating Temperature</b>	10 °C to 32 °C	10 °C to 30 °C
<b>Operating Humidity</b>	20 % to 80 % RH (non-condensing)	20 % to 70 % RH (non-condensing)
<b>Available Versions</b>	-	OKI Pro1040 Label Printer - with CMYK (PRO10-10001) OKI Pro1050 Label Printer - with CMYK+W (PRO10-10002)
<b>What's in the Box</b>	DTM CX86e Colour Tag Printer, one CMY dry toner cartridge (CX86-10020), an external roll supply kit (passive label unwinder), test paper sheets, USB 2.0 cable, EU power cord and instruction Label design software and printer driver can be downloaded from the DTM Print website.	OKI Pro1040 Four-Colour Label Printer/OKI Pro1050 Five-Colour Label Printer including unwind station, a set of four/five dry toner cartridges (PRO10-10006 - PRO10-10009/10010), one service roll 130 mm x 10-20 m (C38RHG130HIS-MKT), one starter roll 3x4" DTM Poly Transparent Gloss (L38NNTG076102HIS-MKT), USB 2.0 cable, EU power cord and instructions Label design software and printer driver can be downloaded from the DTM Print website
<b>Warranty</b>	36 months (after product registration, for devices purchased in EU/EFTA countries and UK)	12 months (after product registration, for devices purchased in EU/EFTA countries and UK)
<b>Manufacturer</b>	DTM Print GmbH	OKI



# Simplified Labelling Process

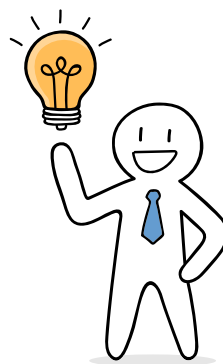
## Traditional Process:

1. Design your label
2. Place an order
3. Proof and change label
4. Wait for delivery
5. Stock all of your different product labels
6. Apply labels
7. Throw away unused labels



## Process with DTM Print:

1. Design your label
2. Print on-demand
3. Apply labels



## Print your full-colour media

### Your advantages:

- ▶ High resolution media (such as labels, tags, pouches, vouchers, etc.)
- ▶ Personalise every single print thanks to digital printing technology
- ▶ Only print the number of media you need; with no minimum quantities
- ▶ Skip delivery times and extra stock costs for different layouts
- ▶ No wastage of media after product layout changes
- ▶ Print graphics, photos, text and barcodes

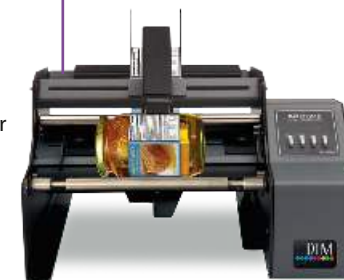
## Your printed media



## Apply your labels semi-automatically

### Fast and easy:

- ▶ Set the guides
- ▶ Place your container in the machine
- ▶ Press footswitch or pull the arm and your label is applied



## Your finished products



## Design & print from any software

### Print & design your label:

- ▶ You are free to choose any design program you prefer
- ▶ Print your labels directly from your Windows computer
- ▶ Use label design applications like NiceLabel or BarTender to take advantage of extra features, such as modified templates, variable data and any barcode type

# LOOKING FOR LABELS?

Recommended Genuine DTM Label Stock for dry toner printers is available in many standard sizes as well as custom-made shapes & sizes.

YOU WANT SAMPLES?



[sales@dtm-print.eu](mailto:sales@dtm-print.eu)

MORE INFORMATION:



[supplies.dtm-print.eu](http://supplies.dtm-print.eu)



Stay up to date and follow us on social media



DTM Print GmbH  
Mainzer Strasse 131  
65187 Wiesbaden  
Germany  
+49 611 927770  
[sales@dtm-print.eu](mailto:sales@dtm-print.eu)  
[dtm-print.eu](http://dtm-print.eu)

